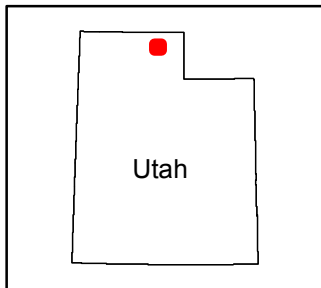
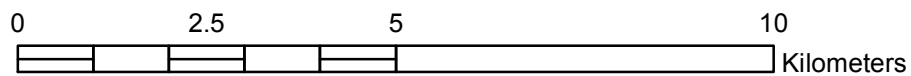
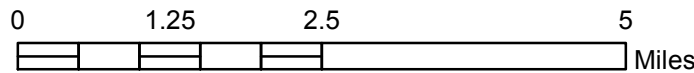
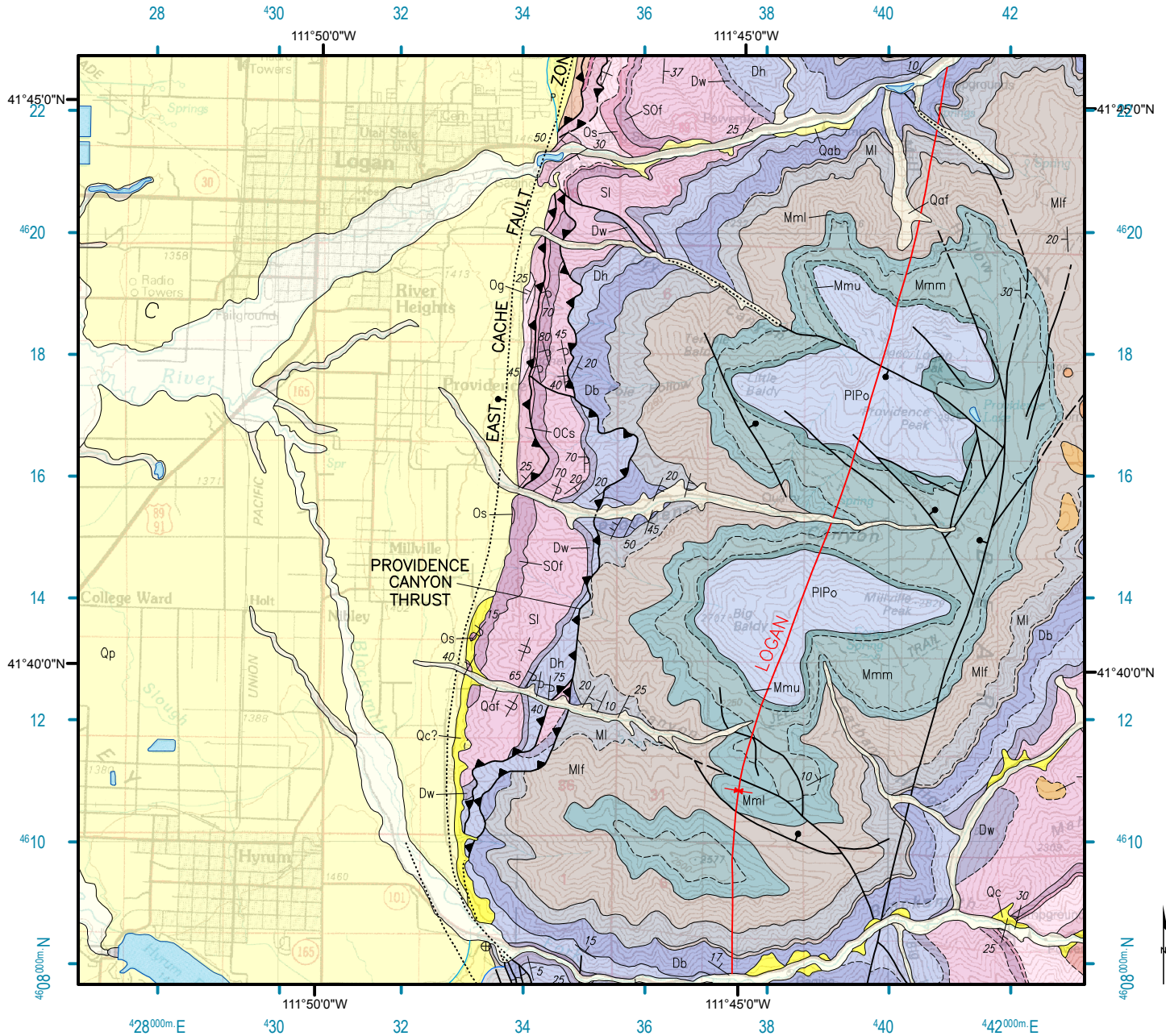


A Portion of Geologic Map of the Logan 30' X 60' Quadrangle, Cache County, Utah

Originally Produced by J.H. Dover (1996) of Utah Geological Survey,
Reproduced by A. Uzunian (2015), Utah State University



Base layer from U.S. Geological Survey, 1984 Projection and 1000-meter grid zone 12N UTM (shown along blue ticks along interior edge of map). 1927 North American Datum.
Geologic layers from Utah Geological Survey map entitled "Geologic Map of the Logan 30' x 60' Quadrangle", by J.H. Dover (1996) available from <http://geology.utah.gov>. Refer to original map for full legend, rock unit descriptions, stratigraphic column and unit correlations.

Rock Unit Abbreviations

af	Tw	MI	SO _f
Qa	Tw?	MI?	Os
Qc	TwI	MDI	Og
Qc?	PIPo	Db	OCs
Qaf	Mu	Dh	Csw
Qp	Mmu	Dw	OCsn
Qab	Mmm	Dw?	Cn
Qab?	Mml	SI	water
Ts	Mlf	SI?	

Faults and Contacts

— contact, well located	— fault, unknown, well located
- - - contact, approximately located	- - - fault, unknown, approximately located
- · - contact, queried	· · · · · fault, unknown, concealed
· · · · · contact, scratch	— fault, gravity slide, well located
- · - marker bed, ·	— scarp, topographic, well located
— fault, normal, well located	— shoreline, Bonneville, well located
- - - fault, normal, approximately located	- - - shoreline, Bonneville, approximately located
· · · · · fault, normal, concealed	— shoreline, Provo, well located
— fault, thrust, well located	— water boundary, ·
- - - fault, thrust, approximately located	— map boundary, ·
· · · · · fault, thrust, concealed	